

Replace boardwalk with a raised granular surface. Install a few culverts.

Reconstruct surface to improve drainage and re-direct the water. Install culverts and ditching where needed.

Sleep climb exceeding 15%. Reconstruct route. Install switchbacks and log steps where needed.

Construct a 0.3m wide natural surface. Allow for adequate drainage.

Poor drainage in this area. Install single file boardwalks or stepping stones.

Existing route. Reconstruct surface to improve drainage and re-direct the water. Install culverts and ditching where needed.

3m stream crossing. Install footbridge with 6x6 abutments filled with local rock found nearby.

Sleep descent exceeding 15%. Install switchbacks and log or stone steps where needed.

Minimal trail construction here. Ensure trail is clearly marked and located a safe distance from cliff ledges. Only minor removal of ground vegetation and the installation on trail markers is required for several long stretches of trail.

Depending on bridge location, some switchbacks and steps may be needed to get to the crest of the next plateau.

2m stream crossing. Install footbridge with 6x6 abutments filled with local rock found nearby.

Minimal trail construction here. Ensure trail is clearly marked and located a safe distance from cliff ledges. Only minor removal of ground vegetation and the installation on trail markers is required for several long stretches of trail. Some boardwalk may be needed in poorly drained areas.

Minimal trail construction here. Ensure trail is clearly marked and located a safe distance from cliff ledges. Only minor removal of ground vegetation and the installation on trail markers is required for several long stretches of trail.

Install a series of log steps and several footbridges at this location. Grub and shape a stable natural trail surface that allows water to easily flow off it.

Avoid wet areas and try to stick to the higher ground. Only minor removal of ground vegetation and the installation on trail markers is required for several long stretches of trail. Some boardwalk may be needed in poorly drained areas.

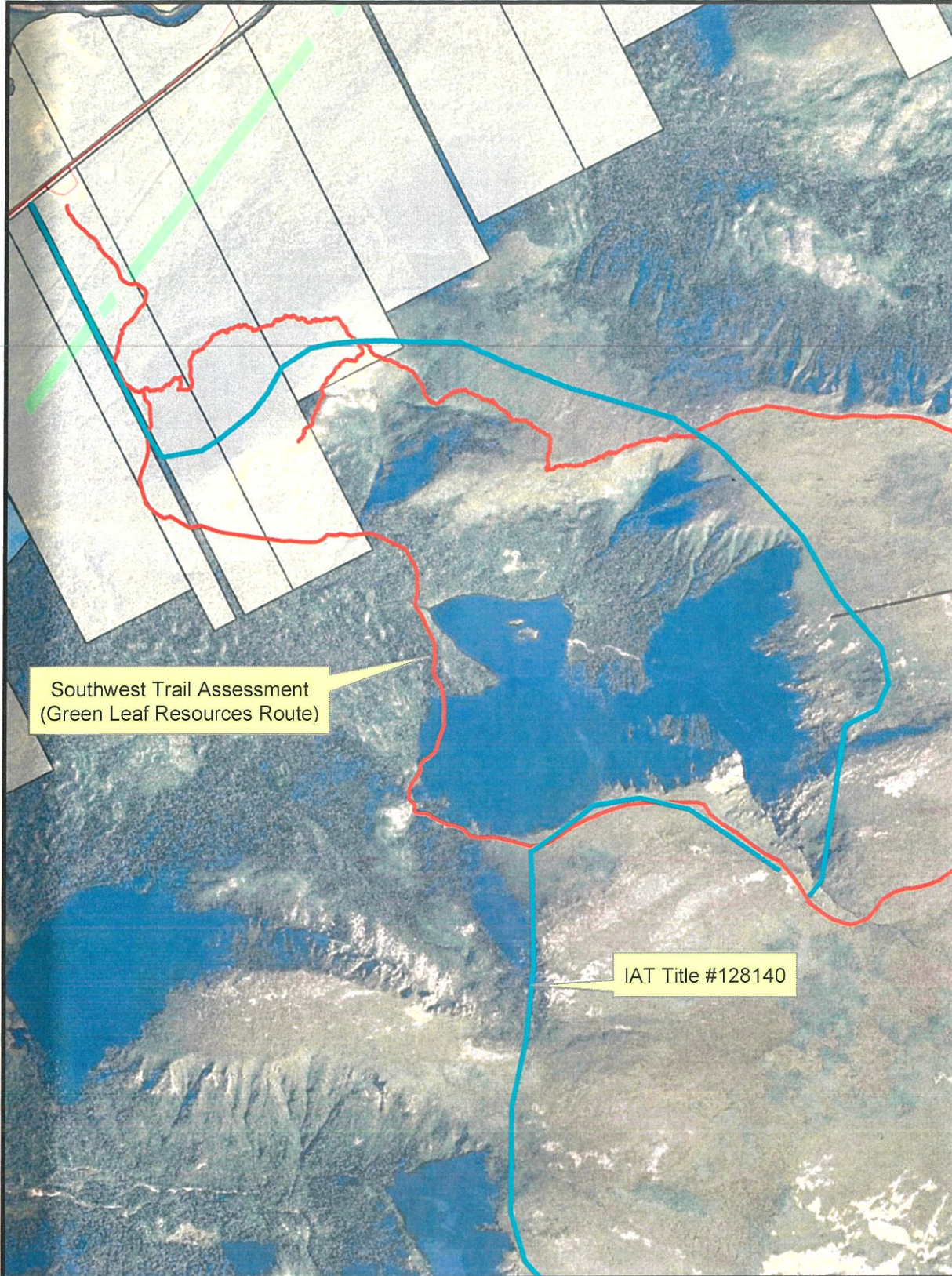
**Starlight Trail**

Key Lookout Areas

0 200 400 600 Meters

# Starlight Trail - Codroy Valley, NL

## Government of Newfoundland & Labrador Department of Fisheries & Land Resources



### NOTE TO USERS

The information on this map was compiled from land surveys registered in the Crown Lands Registry.

Since the Registry does not contain information on all land ownership within the Province, the information depicted cannot be considered complete.

The boundary lines shown are intended to be used as an index to land titles issued by the Crown. The accuracy of the plot is not sufficient for measurement purposes and does not guarantee title.

Users finding any errors or omissions on this map sheet are asked to contact the Crown Lands Inquiries Line by telephone at 1-833-891-3249 or by email at [CrownLandsInfo@gov.nl.ca](mailto:CrownLandsInfo@gov.nl.ca).

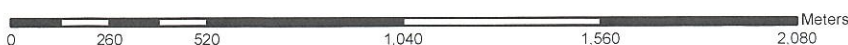
Some titles may not be plotted due to Crown Lands volumes missing from the Crown Lands registry or not plotted due to insufficient survey information.

The User hereby indemnifies and saves harmless the Minister, his officers, employees and agents from and against all claims, demands, liabilities, actions or cause of actions alleging any loss, injury, damages and matter (including claims or demands for any violation of copyright or intellectual property) arising out of any missing or incomplete Crown Land titles, and the Minister, his or her officers, employees and agents shall not be liable for any loss of profits or contracts or any other loss of any kind as a result.

For inquiries please contact the Crown Lands Inquiries Line by telephone at 1-833-891-3249 or by email at [CrownLandsInfo@gov.nl.ca](mailto:CrownLandsInfo@gov.nl.ca). Or visit the nearest Regional Lands Office; [http://www.flr.gov.nl.ca/departement/contact\\_lands.html](http://www.flr.gov.nl.ca/departement/contact_lands.html)



## Crown Lands Administration Division



Scale 1:20,000

Compiled on November 29, 2019

**Government of Newfoundland and Labrador  
Department of Fisheries, Forestry and Agriculture  
Crown Lands Administration Division**



**NOTE TO USERS**

The information on this map was compiled from land surveys registered in the Crown Lands Registry.

Since the Registry does not contain information on all land ownership within the Province, the information depicted cannot be considered complete.

The boundary lines shown are intended to be used as an index to land titles issued by the Crown. The accuracy of the plot is not sufficient for measurement purposes and does not guarantee title.

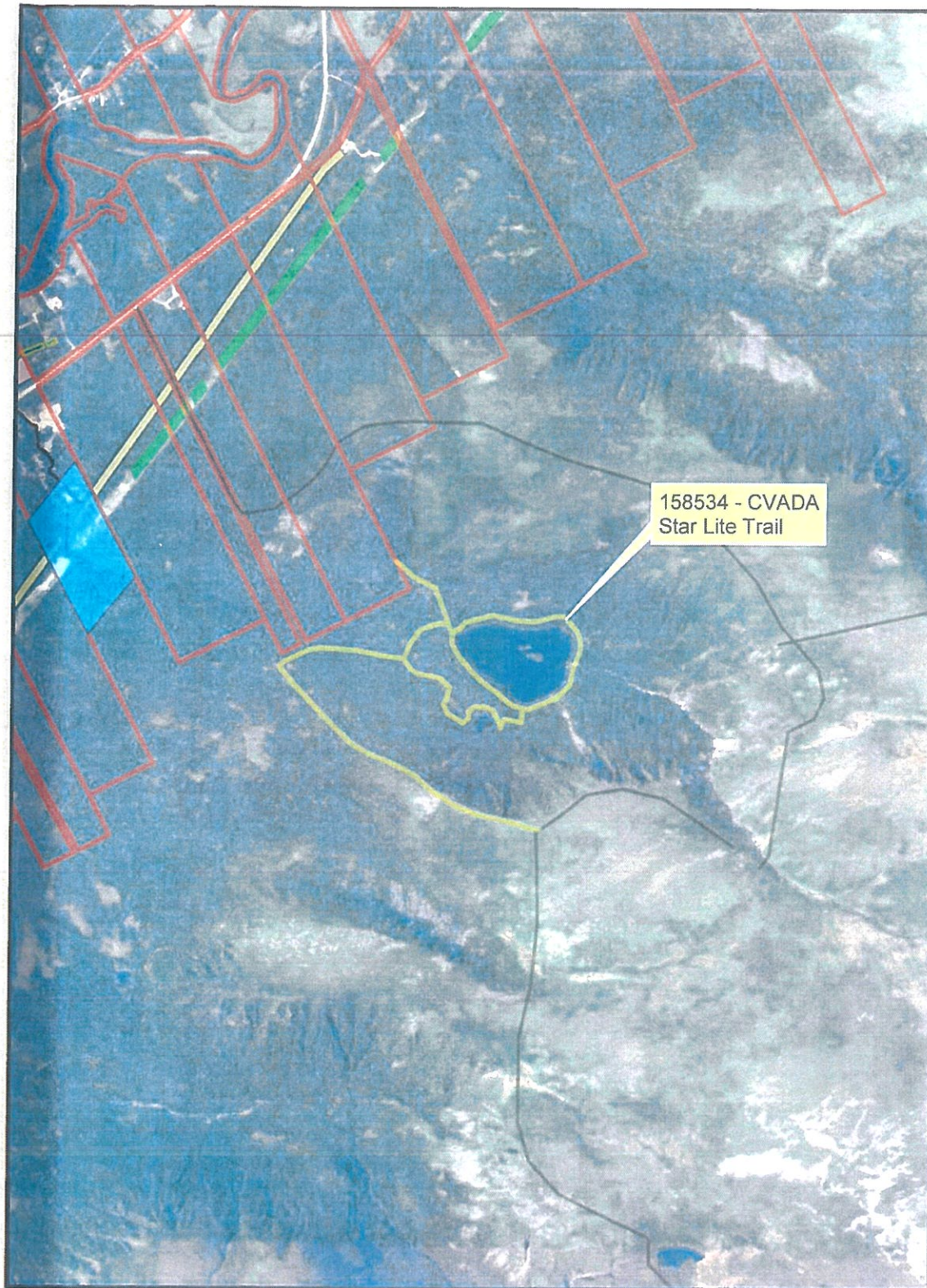
Users finding any errors or omissions on this map sheet are asked to contact the Crown Lands Inquiries Line by telephone at 1-833-891-3249 or by email at [CrownLandsInfo@gov.nl.ca](mailto:CrownLandsInfo@gov.nl.ca).

Some titles may not be plotted due to Crown Lands volumes missing from the Crown Lands registry or not plotted due to insufficient survey information.

The User hereby indemnifies and saves harmless the Minister, his officers, employees and agents from and against all claims, demands, liabilities, actions or cause of actions alleging any loss, injury, damages and matter (including claims or demands for any violation of copyright or intellectual property) arising out of any missing or incomplete Crown Land titles, and the Minister, his or her officers, employees and agents shall not be liable for any loss of profits or contracts or any other loss of any kind as a result.

For general inquiries please contact the Crown Lands Inquiries Line by telephone at 1-833-891-3249 or by email at: [CrownLandsInfo@gov.nl.ca](mailto:CrownLandsInfo@gov.nl.ca).

Or book an appointment to speak with a regional Crown Lands representative at: <https://www.gov.nl.ca/ffa/lands/appointments/>



Scale  
1:25,000  
Date: 10/1/2021

